



**ARTWALK**  
RESIDENCES

Powered by

**MEXLIFE**<sup>®</sup>  
REALTORS





ART WALK is an experience for a small group of passionate and nature-respecting individuals.

It is rooted in Mexican Art Expressions founded in Nature. Inspired by the four elements of nature, ARTWALK pays tribute to Mother Earth. These four elements are present in all spaces within the complex and infuse the members of the ARTWALK community. This harmonious blend of natural elements conveys balance and equilibrium throughout the building.



As a participant in the LEED® program, ARTWALK is committed to environmental care and the well-being of the community where it is being constructed.





# AMENITIES

- INFINITY POOL ON ROOFTOP
- JACUZZI
- GYM & YOGA DECK
- HAMMOCK AREA
- CENOTE TYPE COLD-WATER POOL
- FIREPIT
- 24H. SECURITY
- LOBBY
- ART GALLERY
- UNDERGROUND PARKING
- BAR
- ELEVATOR





# FLOORPLANS



# STUDIOS

level Earth



ARTWALK  
RESIDENCES





# UNIT G1

level Earth



## STUDIO + BATHROOM

|          | m <sup>2</sup> | sq feet |
|----------|----------------|---------|
| Interior | 55.28          | 595.03  |
| Exterior | 7.45           | 80.19   |
|          | 62.73          | 675.22  |



# UNIT G2

level Earth



## STUDIO + BATHROOM

|          | m <sup>2</sup> | sq feet |
|----------|----------------|---------|
| Interior | 37.44          | 403.0   |
| Exterior | 7.20           | 77.5    |
|          | 44.64          | 480.0   |







# UNIT G3

level Earth



## STUDIO + BATHROOM

|          | m <sup>2</sup> | sq feet |
|----------|----------------|---------|
| Interior | 37.44          | 403.0   |
| Exterior | 7.20           | 77.5    |
|          | 44.64          | 480.0   |





# UNIT G4

level Earth



## STUDIO + BATHROOM

|          | m <sup>2</sup> | sq feet |
|----------|----------------|---------|
| Interior | 37.44          | 403.0   |
| Exterior | 7.20           | 77.5    |
|          | 44.64          | 480.0   |



# UNIT G5

level Earth



## STUDIO + BATHROOM

|          | m <sup>2</sup> | sq feet |
|----------|----------------|---------|
| Interior | 33.54          | 361.02  |
| Exterior | 6.45           | 69.42   |
|          | 39.99          | 430.44  |



# UNIT G6

level Earth



## STUDIO + BATHROOM

|          | m <sup>2</sup> | sq feet |
|----------|----------------|---------|
| Interior | 31.69          | 341.11  |
| Exterior | 8.04           | 86.54   |
|          | 39.73          | 427.65  |

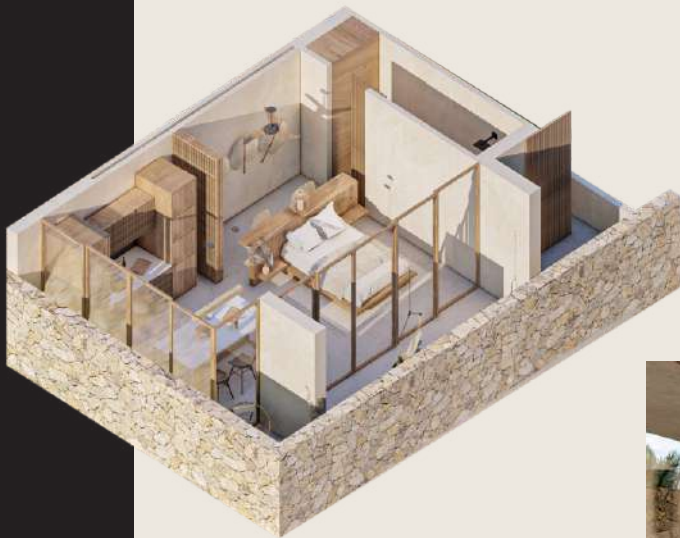




ARTWALK  
RESIDENCES

# STREET LEVEL





PB - 1

level Fire



1 BED / 2 BATH

|          | m <sup>2</sup> | sq feet |
|----------|----------------|---------|
| Interior | 41.58          | 447.56  |
| Exterior | 31.41          | 338.09  |
|          | 72.99          | 785.65  |





PB - 2

level Fire



1 BED / 2 BATH

|          | m <sup>2</sup> | sq feet |
|----------|----------------|---------|
| Interior | 68.08          | 732.81  |
| Exterior | 24.07          | 259.08  |
|          | 92.15          | 991.89  |





PB - 3

level Fire



1 BED / 2 BATH

|          | m <sup>2</sup> | sq feet |
|----------|----------------|---------|
| Interior | 66.09          | 711.38  |
| Exterior | 22.71          | 244.45  |
|          | 88.80          | 955.83  |







PB - 5

level Fire



2 BED+flex / 3 BATH

|          | m <sup>2</sup> | sq feet |
|----------|----------------|---------|
| Interior | 94.02          | 1012.02 |
| Exterior | 29.45          | 317.00  |
|          | 123.47         | 1329.02 |





PB - 6

level Fire



1 BED / 2 BATH

|          | m <sup>2</sup> | sq feet |
|----------|----------------|---------|
| Interior | 68.08          | 732.80  |
| Exterior | 21.20          | 228.20  |
|          | 89.28          | 961.00  |





PB - 7

level Fire



1 BED / 2 BATH

|          | m <sup>2</sup> | sq feet |
|----------|----------------|---------|
| Interior | 41.50          | 447.57  |
| Exterior | 36.65          | 394.49  |
|          | 78.23          | 842.06  |





# LEVEL 1 & 2





U 101  
level agua  
U 201  
level aire



1 BED / 2 BATH

|          | m <sup>2</sup> | sq feet |
|----------|----------------|---------|
| Interior | 41.58          | 447.56  |
| Exterior | 30.77          | 331.20  |
|          | 72.35          | 778.76  |





U 102  
level agua  
U 202  
level aire



1 BED / 2 BATH

|          | m <sup>2</sup> | sq feet |
|----------|----------------|---------|
| Interior | 68.08          | 732.80  |
| Exterior | 24.07          | 259.09  |
|          | 92.15          | 991.89  |





U 103  
level agua  
U 203  
level aire



2 BED + flex / 3 BATH

|          | m <sup>2</sup> | sq feet |
|----------|----------------|---------|
| Interior | 97.35          | 1047.87 |
| Exterior | 33.61          | 361.77  |
|          | 130.96         | 1409.64 |





U 104  
level agua

U 204  
level aire



STUDIO / 1 BATH

|          | m <sup>2</sup> | sq feet |
|----------|----------------|---------|
| Interior | 40.07          | 431.31  |
| Exterior | 9.14           | 98.38   |
|          | 49.21          | 529.69  |







U 105  
level agua

U 205  
level aire



2 BED+FLEX / 3 BATH

|          | m <sup>2</sup> | sq feet |
|----------|----------------|---------|
| Interior | 94.02          | 1012.02 |
| Exterior | 29.45          | 317.00  |
|          | 123.47         | 1329.02 |





U 106  
level agua  
U 206  
level aire



1 BED / 2 BATH

|          | m <sup>2</sup> | sq feet |
|----------|----------------|---------|
| Interior | 68.08          | 732.80  |
| Exterior | 21.20          | 228.20  |
|          | 89.28          | 961.00  |





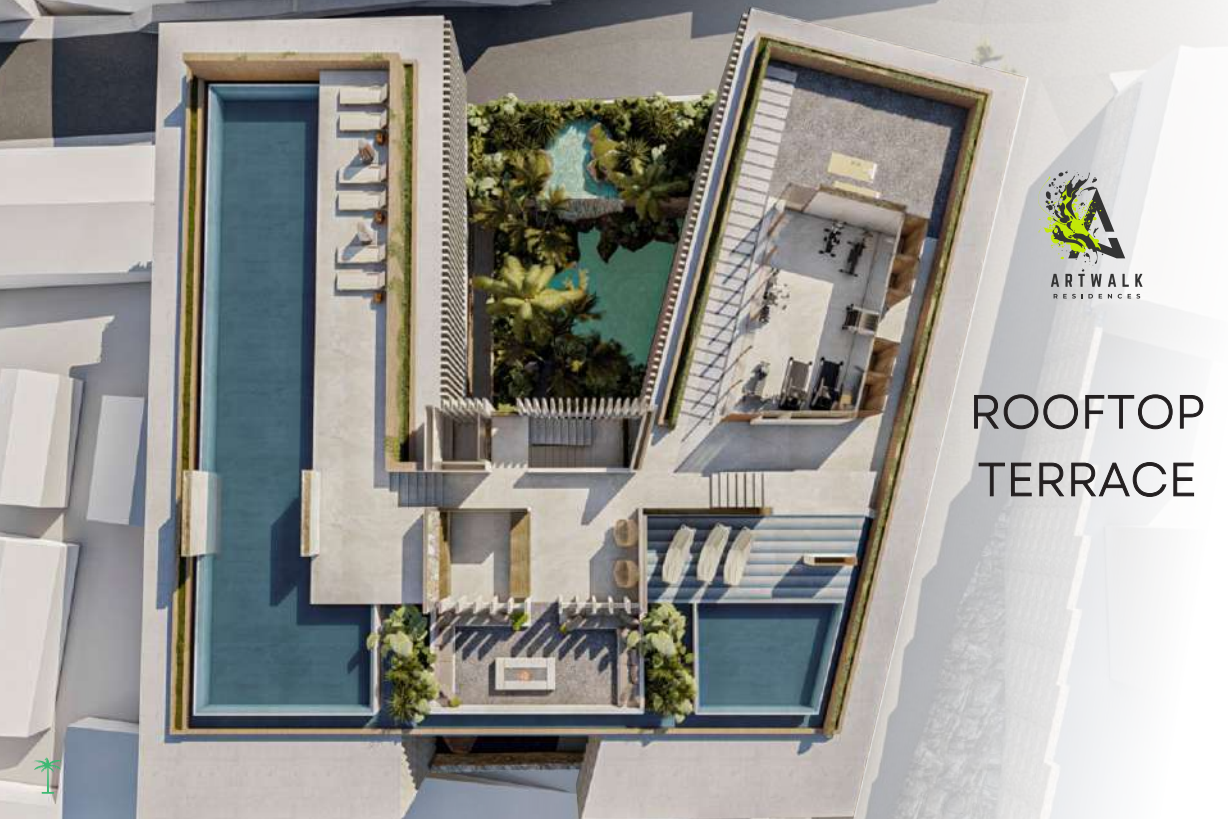
U 107  
level agua  
U 207  
level aire



1 BED / 2 BATH

|          | m <sup>2</sup> | sq feet |
|----------|----------------|---------|
| Interior | 41.58          | 447.57  |
| Exterior | 36.65          | 394.49  |
|          | 78.23          | 842.06  |





ARTWALK  
RESIDENCES

ROOFTOP  
TERRACE







**ARTWALK**  
RESIDENCES

Powered by



[www.artwalkpv.com](http://www.artwalkpv.com)